

PLUIT VILLAGE

IF3



WFFA

PULSE

JAKARTA

INDONESIA · OCTOBER 5-6

ATHLETE HANDBOOK



WFFA
PULSE
SERIES

GETTING THERE



JAKARTA,
INDONESIA



October 5-6, 2024



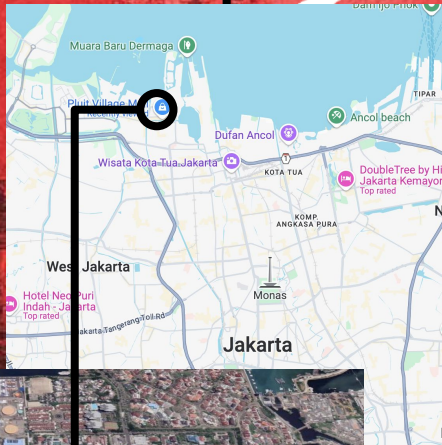
Jakarta, Indonesia



Pluit Village Mall



**Jl. Pluit Indah No.12, RT.6/RW.4,
Pluit, Kec. Penjaringan, Jkt Utara**



**PLUIT
VILLAGE
MALL**



Options to get to Jakarta include:

- **Soekarno-Hatta International (CGK)**
20 kilometers away from the city
- **Halim Perdanakusuma Int’nal (HLP)**
12 kilometers away from the city

TRAVEL REGULATIONS

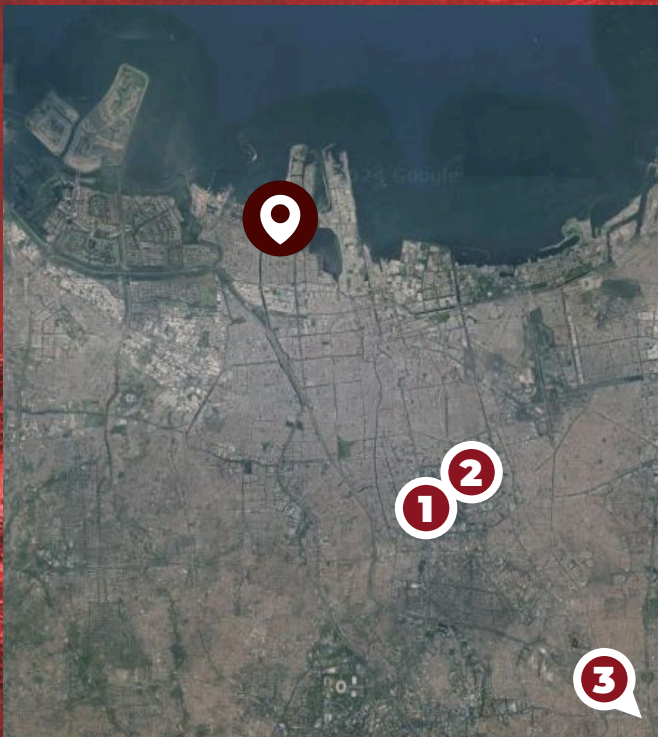
All travelers entering **Indonesia** will need the following either a **travel visa** or, depending on their country of origin, a **visa exemption**

To learn more about the requirements to enter Indonesia and the process to request a visa, please [visit this link](#)



WFFA
PULSE
SERIES

ABOUT THE AREA



Jakarta, the capital of Indonesia, holds a fascinating history that stretches back centuries. As the political and economic heart of the country, it has evolved into a bustling urban center. The city offers a wide array of attractions, including the National Monument, Kota Tua's colonial architecture, and the Istiqlal Mosque, the largest in Southeast Asia. Jakarta's culinary landscape is famous for its rich variety of Indonesian dishes, from street food to fine dining. Visitors can immerse themselves in its vibrant festivals and museums, making Jakarta an exciting destination for travelers.



1

National Monument

A towering symbol of Indonesia's independence, standing tall in central Jakarta



2

Istiqlal Mosque

Southeast Asia's largest mosque, representing Jakarta's rich religious heritage



3

Mini Indonesia

A cultural park displaying the diverse traditions and architecture of Indonesia's regions



WFFA
PULSE
SERIES

ACCOMMODATION SUGGESTIONS



350K
IDR
PER NIGHT

Golden Sky Condotel

8, Jl. Taman Pluit Kencana Selatan No.48
Pluit, Jakarta

750m away from the venue

About this hotel

- Free wi-fi
- Air conditioning
- Complimentary breakfast
- 10.5km away from the city centre
- 22km away from the airport



650K
IDR
PER NIGHT

Holiday Inn Express Jakarta Pluit

Emporium Pluit Mall 10th Floor
Pluit, Jakarta

1.4km away from the venue

About this hotel

- Free wi-fi
- Air conditioning
- Free breakfast
- 9.7km away from the city centre
- 21km away from the airport



450K
IDR
PER NIGHT

favehotel Pluit Junction

Jl. Pluit Selatan Raya No.1, RT.21/RW.8
Penjaringan, Jakarta

1.2km away from the venue

About this hotel

- Free wi-fi
- Air conditioning
- Free breakfast
- 9.8km away from the city centre
- 21.4km away from the airport



250K
IDR
PER NIGHT

Grandboutique Inn

Jl. Pluit Karang Ayu Blok B1 Utara Greenbay
Pluit Tower B LGM 30
Penjaringan, Jakarta

2.4km away from the venue

About this hotel

- Free wi-fi
- Air conditioning
- 13km away from the city centre
- 24km away from the airport



WFFA
PULSE
SERIES

CITY TRANSPORTATION OPTIONS



PUBLIC TRANSPORT

- Jakarta's public transportation network includes **buses**, **commuter trains**, and the **TransJakarta bus** rapid transit system
- To travel from the city center to the **Pluit Village Mall**, the best options are the TransJakarta Bus from the nearest bus stop and the Commuter Line train from Jakarta Kota Station to Ancol Station, followed by a short taxi ride



TAXIS

- **Taxis** are easily accessible in Jakarta, with options to hail them on the street or book through ride-hailing apps like **Gojek**, **Grab**, or **Uber**



CYCLING AND WALKING

- Jakarta features a growing network of cycling paths and pedestrian-friendly areas, with various rental services available, including **Gojek**, **Grab**, and the public **Bike Sharing Jakarta** program, promoting biking as a sustainable transportation option



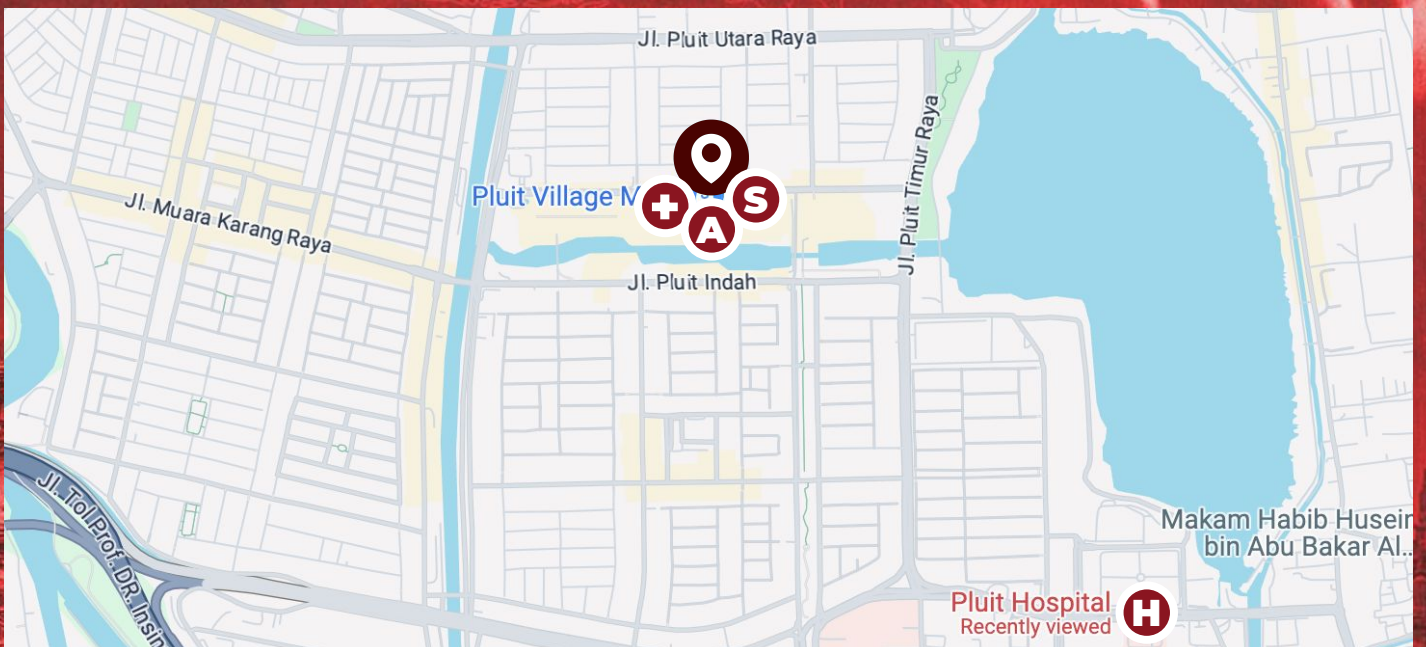
OTHER OPTIONS

- Renting a car in Jakarta is convenient with various agencies like **Avis** and **Budget**, offering an affordable way to explore the city, its attractions and its surroundings
- The Pluit Village Mall offers a spacious **parking area** for all of its customers and visitors at inexpensive rates



WFFA
PULSE
SERIES

NEARBY SERVICES



KEY SERVICES



Pluit Hospital
Jl. Pluit Sel. No.2, Pluit
1.9km from the venue



Apotik Damai Abadi
Pluit Village Mall, floor 3
In the venue



ATM BNI Gallery
Pluit Village Mall, floor 1
In the venue



Pluit Village Mall
Jl. Pluit Indah No.12, RT.6/RW.4, Pluit
In the venue

RESTAURANTS

Solaria [Indonesian cuisine]
Pluit Village Mall
In the venue

RamenYa! [Japanese cuisine]
Pluit Village Mall
In the venue

TaWan [Chinese cuisine]
Pluit Village Mall
In the venue

KFC [fast food]
Pluit Village Mall
In the venue



WFFA
PULSE
SERIES

SOCIAL MEDIA GUIDELINES

 Competition name: **WFFA Pulse Jakarta 2024**

 Venue: **Pluit Village Mall**

 Website: **www.thewffa.org/event/pulse-jakarta-2024**

 Live Stream: **www.youtube.com/c/thewffa**



TAGS

@thewffa

@indonesiaf3

@pluit_village



HASHTAGS

#PulseSeries

#FreestyleFootball

#AllYouNeedsABall

#fslife

**Remember to add the tags
and hashtags listed above to all
your social posts and Stories!**



WFFA
PULSE
SERIES

COMPETITIVE FORMAT



**JUDGE
TUNGAGE**



**JUDGE
ARDHI**



**JUDGE
JORDY**

RULES

- The regular **WFFA rules** apply: no hands, no props, 1 ball, no adjusting or changing clothes and no audience on stage during the performance
- In the **Circles** round, each athlete will have **3 rounds of 30 seconds** to perform; from the **Top 16** on, battles will have **no time limit**
- When an athlete is performing, **inappropriate interferences** (i.e. invading personal space) by the other athlete are forbidden
- Athletes may be marked down by judges for **making mistakes, any unfair play or bad attitude, repetition and violating the rules**
- The **best 4 men and 3 women** in the tournament will earn themselves a spot at the Finals of the **World Freestyle Football Championship**

CRITERIA

The judges evaluate battles according to five criteria: **Difficulty, Originality, Control, Execution and All-round**

- **Difficulty:** difficult moves, flow, execution, dynamics
- **Originality:** original composition of tricks, unique execution of moves, use of new, unusual or unexpected tricks
- **Control:** general control of the ball on stage
- **Execution:** cleanness, flow, style, dynamics, musicality and attitude
- **All-round:** general ability to perform all parts of sport the best way possible

CLICK HERE TO DOWNLOAD THE
OFFICIAL RULES
OF THE SPORT OF FREESTYLE FOOTBALL



WFFA
PULSE
SERIES

USEFUL RESOURCES

WFFA



Lucaso Skoda
Event Director
+420 775 210 889



Matthew Mario
On-site Project Manager
+62 859-4533-1992



Jordi Mestre
Communications Manager
+34 647 094 896

SERVICES



Police & Ambulance
Emergency number
112



Tourism Board
Wonderful Indonesia
www.indonesia.travel



Venue
Pluit Village Mall
+62 [21] 6667-3333



TOURNIFY

During this event, the WFFA will be using Tournify, an easy and intuitive system to follow all schedules and results. The event information will be online on **October 4th at 11:59pm WIB**, once the Circles are ready.

Find all results from WFFA Pulse Jakarta 2024 in the following link:

www.tournify.uk/live/pulsejakarta2024

10

WFFA



WFFA
PULSE
SERIES

©2024 The World Freestyle Football Association. All rights reserved

www.thewffa.org

PLUIT VILLAGE

